

# INSTRUCTION MANUAL

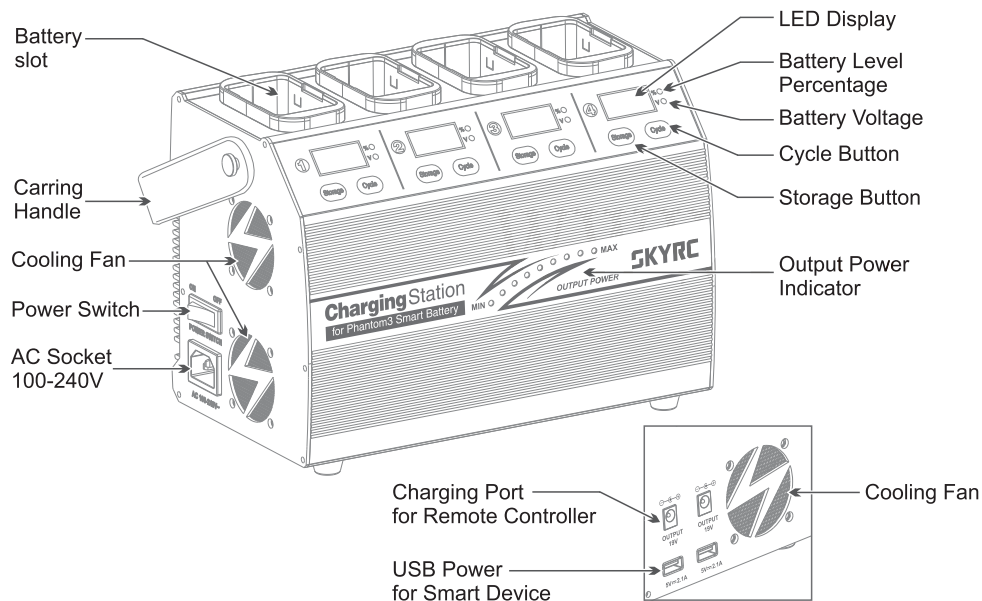
## CHARGING STATION 4P3 SK-100118

# SKYRC

### INTRODUCTION

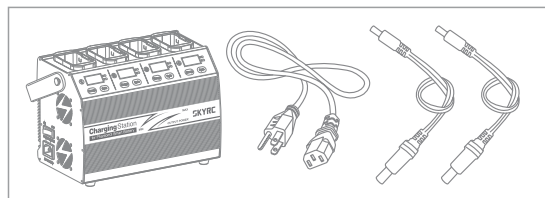
The Charging Station 4P3 is a four channels charger designed and built exclusively for Phantom3 Smart Battery. This charger is capable of charging, storage and deep cycling four DJI smart batteries simultaneously. Two smart devices can be charged via USB port and two remote controller can be charged at same time.

This unit is simple to use, but the operation of a sophisticated automatic charger such as Charging Station 4P3 does require some knowledge on the part of the user. These operating instructions are designed to ensure that you quickly become familiar with its functions. It is therefore important that you read right through the Operating Instructions, Warning and Safety Notes before you attempt to use your new charger for the first time. We hope you have many years of pleasure and success with your new battery charger.



### CONTENTS

1. Charging Station 4P3
2. Power Cord
3. Remote Controller Charging Cable x 2

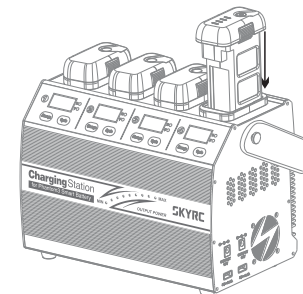


### CHARGING YOUR BATTERIES

1. Connect the Power Cord to the AC socket(100-240V).
2. Turn ON the Power Switch. The LED display show "CHA" and the charger is in CHARGE MODE.
3. Insert the battery into the battery slot. The 4P3 will communicate with the battery and send the battery into CHARGE MODE automatically.(If the battery level is above 95%, turn on the battery before charging.)

The battery's green LED will be blinking. and the LED display will show charging percentage of battery. When the battery is fully charged. The battery's green LED's will turn OFF and the charger station will beep 5 times. Remove the battery and turn off Charging Station 4P3.

CHA %  
V



Insert the Battery Into the Battery Slot

### STORAGE MODE

When the battery is idle for more than ten days. It is better to discharge the battery to 65% of total power in order to prevent swelling. If the battery level is below 65%(15.6V), you need recharge it to 65%.

1. Push storage button, the LED will show 5f0 .
2. Turn ON the battery before you put it in STORAGE MODE. Press the Power Button once, then press again and hold for 2 seconds to turn on. The Power LED will turn red and the battery level Indicators will display the current battery level.
3. Insert the battery into the battery slot. The battery's green LED will be blinking. and the LED of charger will display voltage of the battery.
4. If the battery level is more than 65%, Charging Station 4P3 will discharge the battery to 65%. If the battery level is below 65%, this unit will charge the battery to 65% for storage automatically.
5. When the battery level is reached 65%, the LED will display - d - and 5f0 repeatedly and beeps 5 times. Remove the battery and turn off Charging Station 4P3.

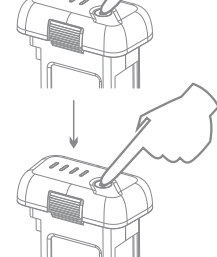
Push Storage Button



Press the Power Button once



Press Again and Hold for 2 Seconds to Turn On



### SPECIFICATIONS

- |                   |             |                 |               |
|-------------------|-------------|-----------------|---------------|
| ● Input Voltage:  | AC 100-240V | ● Working Mode: | Charge Mode   |
| ● Charge Power:   | 100W x 4    |                 | Storage Mode  |
| ● Charge Current: | 6.0A        |                 | Cycle Mode    |
| ● USB Output:     | 5V/2.1A x2  | ● Size:         | 255x142x180mm |
| ● DC Output:      | 19V/2A x2   | ● Weight:       | 3.22kg        |

## CYCLE MODE

**Note: For extended life of your batteries, it is recommended that you DEEP CYCLE your batteries following 10 flight cycles.**

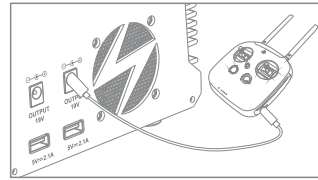
1. Push cycle button, the LED will show **90**.

*Turning On the battery:*

2. Press the Power Button once, then press again and hold for 2 seconds to turn it on. The Power LED will turn red and the battery level Indicators will display the current battery level.
3. Insert the battery into the battery slot. The 4P3 will discharge it to 13.2V.
4. Once discharge to 13.2V, the 4P3 will automatically send the battery into CHARGE MODE.
5. When the battery is fully charged. The battery's green LED's will turn OFF and the charger station will beep 5 times. Remove the battery and turn off Charging Station 4P3.

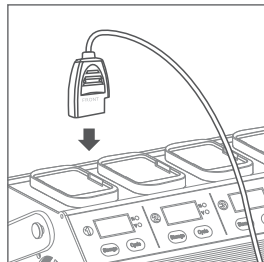
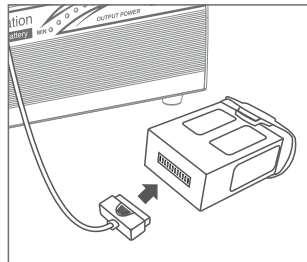
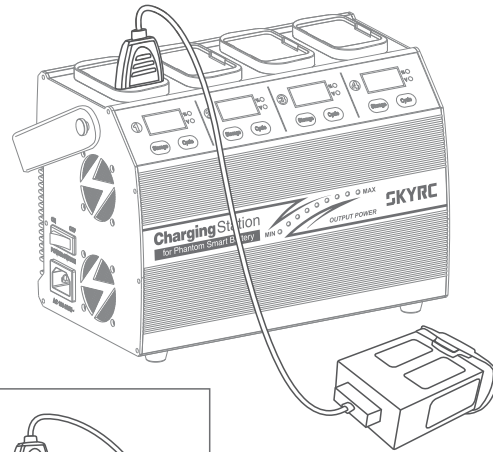
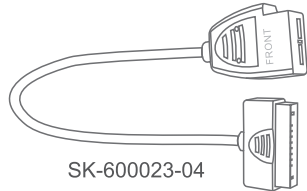
## CHARGING YOUR REMOTE CONTROLLER

1. Turn ON the Charging Station 4P3.
2. Connect your remote controller to the DC charging port using the cable supplied.
3. When the 4 LED's on the remote controller are WHITE, it is fully charged.
4. Remove the cable from the Charging Station 4P3.
5. Turn OFF the Charging Station 4P3.



## OPTIONAL PART

Cable Adaptor for PHANTOM 4 Battery



## CHARGING YOUR iOS DEVICE OR ANDROID DEVICE

1. Turn ON the Charging Station 4P3.
2. Connect your smart device to the USB port using the cable supplied by smart device's manufacturer.
3. When your smart device shows 100%, it is fully charged.
4. Remove the cable from the Charging Station 4P3.
5. Turn OFF the Charging Station 4P3.

This appliance can be used by children aged from 14 years and above and persons with reduced physical, sensory or mental capabilities or lack of experience and knowledge if they have been given supervision or instruction concerning use of the appliance in a safe way and understand the hazards involved. Children shall not play with the appliance. Cleaning and user maintenance shall not be made by children without supervision. If the supply cord is damaged, it must be replaced by the manufacturer, its service agent or similarly qualified persons in order to avoid a hazard.

⚠ Never leave the charger unattended when it is connected to its power socket. If any malfunction is found, TERMINATE THE PROCESS AT ONCE.

⚠ Keep the charger well away from dust, damp, rain, heat, direct sunshine and vibration. Never drop it.

⚠ Never charge batteries on wood, cloth, carpet or on any other flammable material.

⚠ During charging, the charger must be placed in a well ventilated area.

⚠ This charger is designed and built exclusively for Phantom3 Smart Battery. The allowable AC input voltage is 100~240V AC.

♻ This marking indicates that this product should not be disposed with other household wastes throughout the EU. To prevent possible harm to the environment or human health from uncontrolled waste disposal, recycle it responsibly to promote the sustain able reuse of material resources. To return your used device, please use the return and collection systems or contact the retailer where the product was purchased. They can take this product for environmental safe recycling.

The Charging Station 4P3 satisfy all relevant and mandatory CE directives and FCC Part 15 Subpart B: 2016.

For EC directives:

The product has been tested to meet the following technical standards:

Test Standards	Title	Result
EN55014-1:2006+ A1:2009+A2:2011	Electromagnetic compatibility - Requirements for household appliances, electric tools and similar apparatus - Part 1: Emission	Conform
EN55014-2: 1997+ A1:2001+A2:2008	Electromagnetic compatibility - Requirements for household appliances, electric tools and similar apparatus - Part 2: Immunity - Product family standard	Conform
EN 61000-3-2:2014	Electromagnetic compatibility (EMC) - Part 3-2: Limits - Limits for harmonic current emissions (equipment input current ≤ 16 A per phase)	Conform
EN 61000-3-3:2013	Electromagnetic compatibility (EMC) - Part 3-3: Limits - Limitation of voltage changes, voltage fluctuations and flicker in public low-voltage supply systems, for equipment with rated current ≤ 16 A per phase and not subject to conditional connection	Conform
EN 60335-1: 2012 +A11: 2014	Household and similar electrical appliances - Safety - Part 1: General requirements	Conform
EN 60335-2-29: 2004+A2: 2010	Household and similar electrical appliances - Safety - Part 2: Particular requirements for battery chargers	Conform
EN 62233: 2008	Measurement methods for electromagnetic fields of household appliances and similar apparatus with regard to human exposure	Conform

♻ This symbol means that you must dispose of electrical from the general household waste when it reaches the end of its useful life. Take your charger to your local waste collection point or recycling centre. This applies to all countries of the European Union, and to other European countries with a separate waste collection system.



Manufactured by  
**SKYRC TECHNOLOGY CO., LTD.**  
www.skyrc.com 7504-0750-02