

STEP ONE *baby*



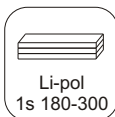
500 mm



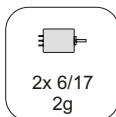
412 mm



35g



Li-pol
1s 180-300

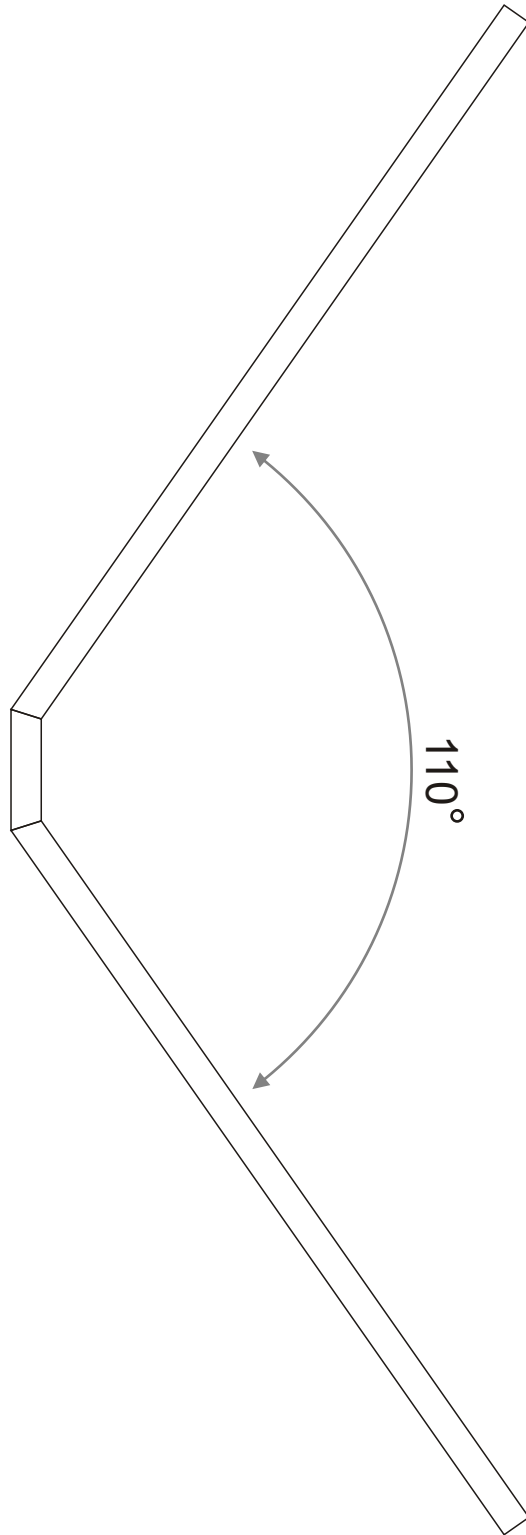


2x 6/17
2g

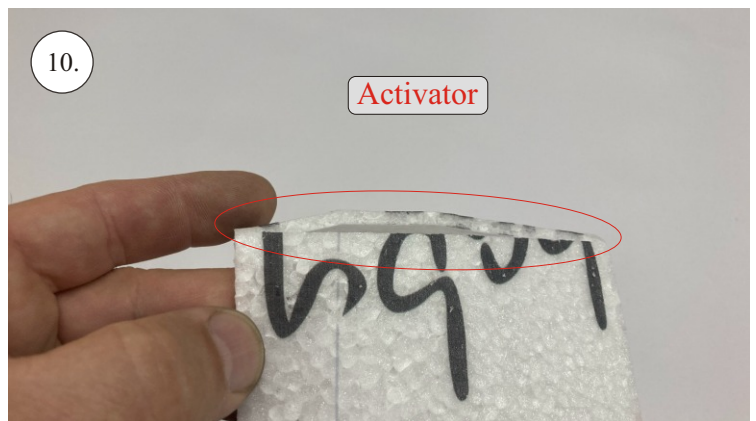
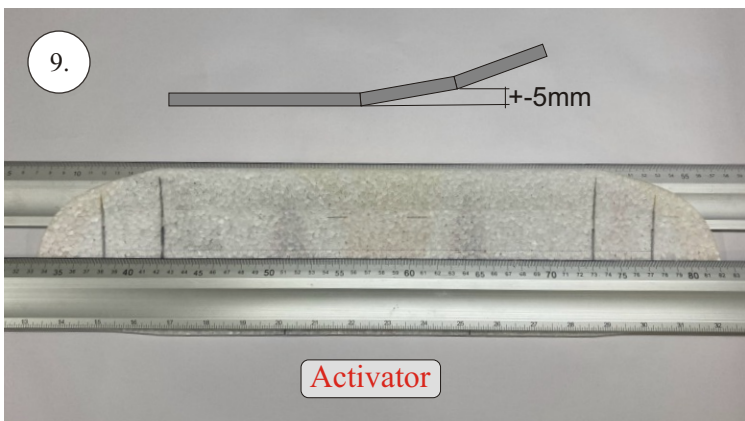
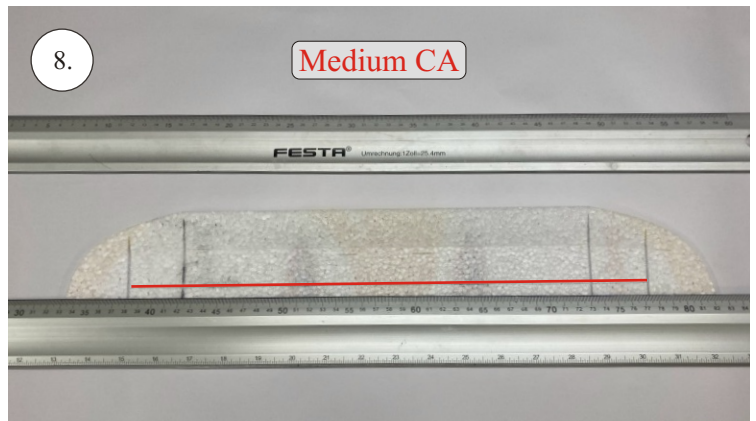
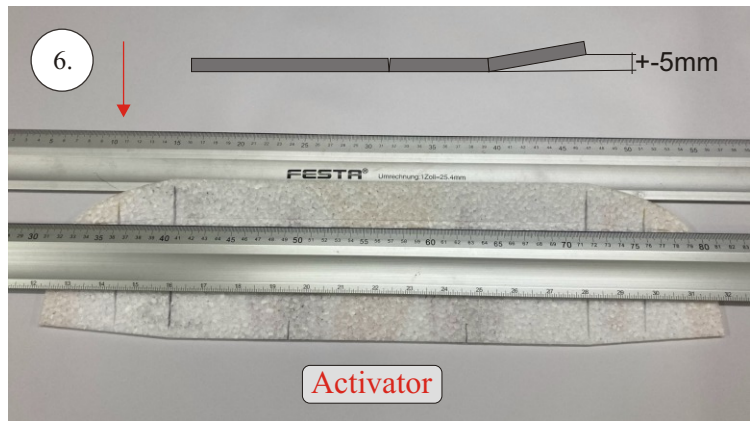
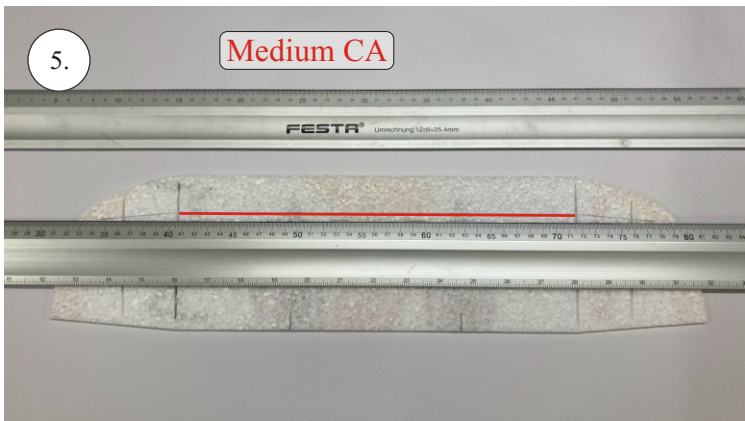
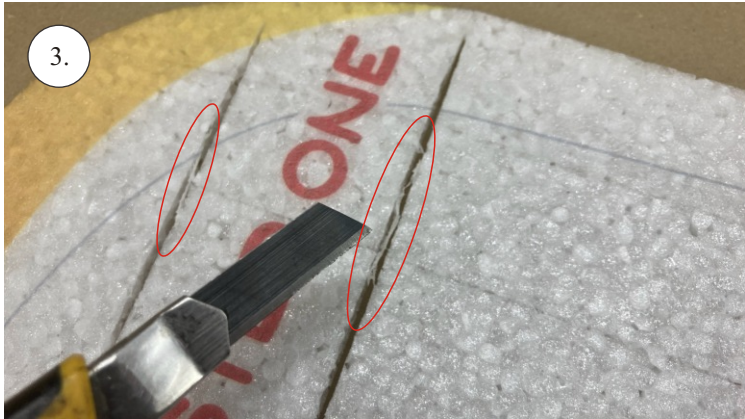


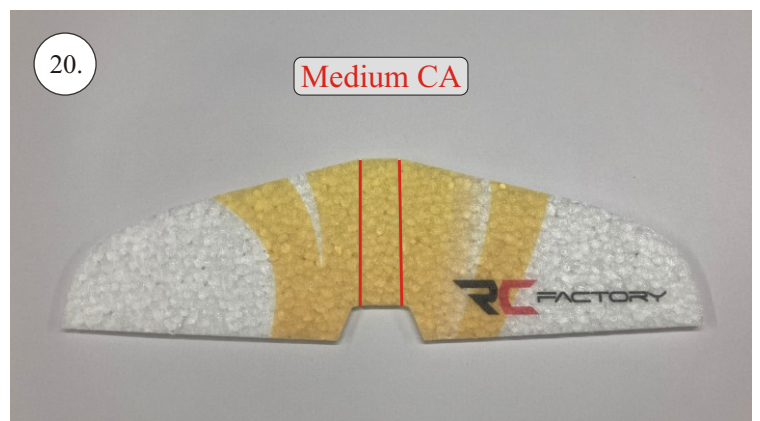
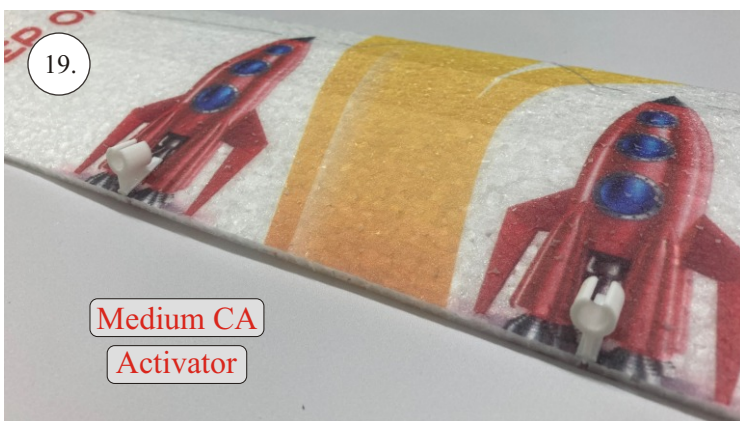
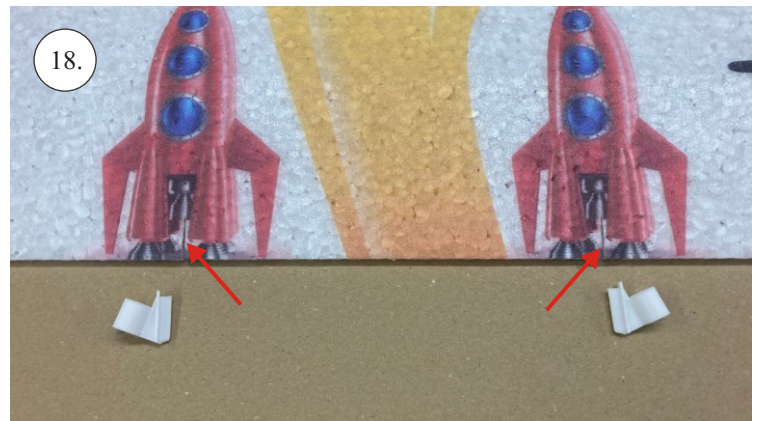
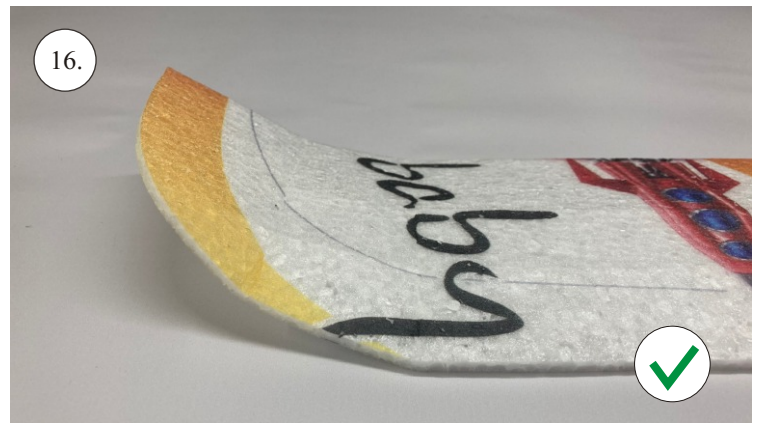
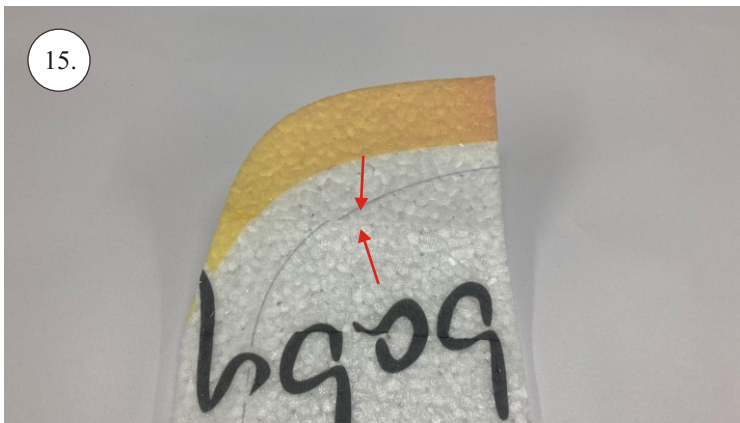
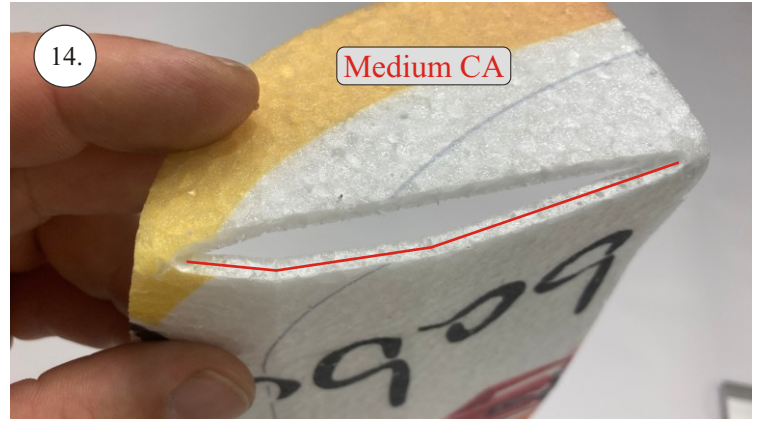
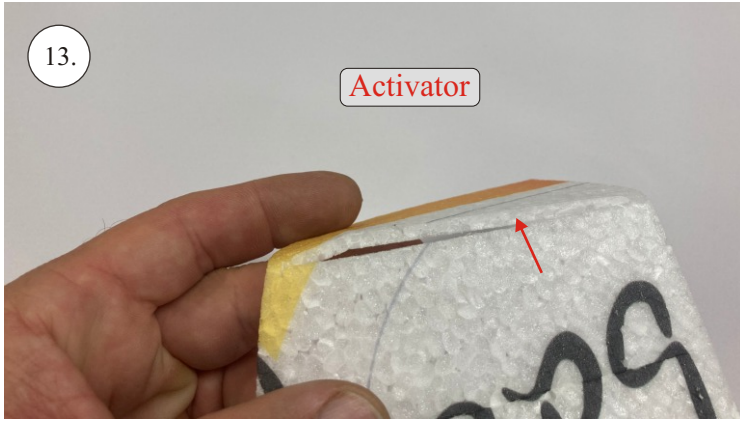
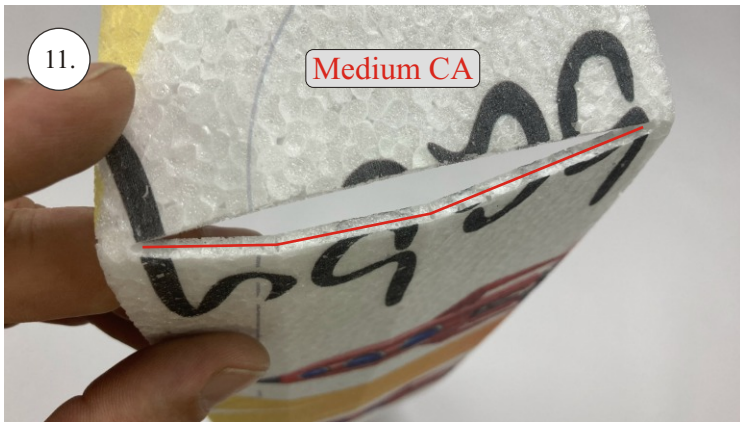
30-37mm

V2.0



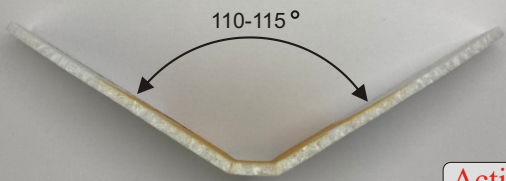
Print





21.

* použijte šablonu z 2. strany návodu
* use the template from page 2 of the manual



Activator

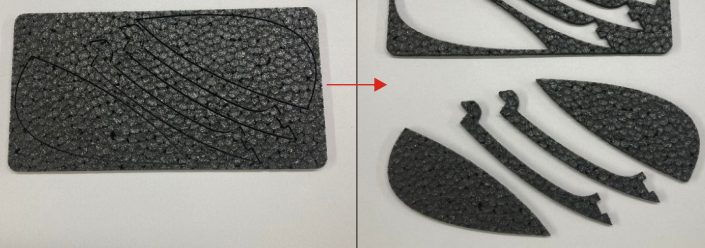
22.

Medium CA

Activator



23.



24.

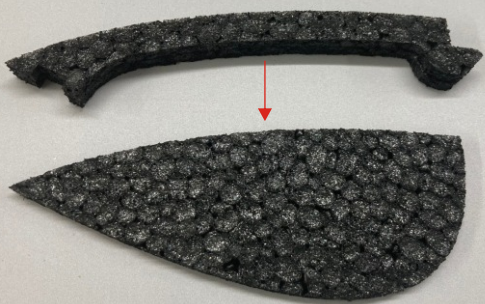


Medium CA Activator

25.

Medium CA

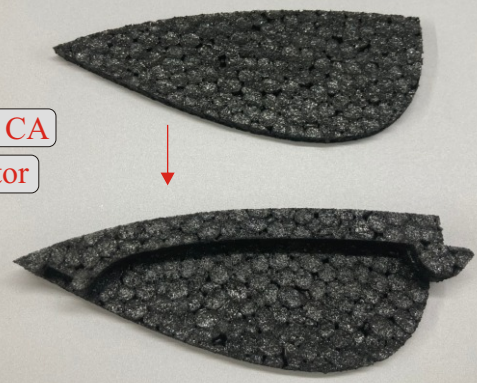
Activator



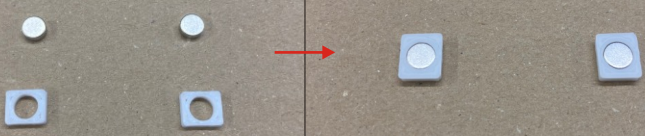
26.

Medium CA

Activator



27.



28.

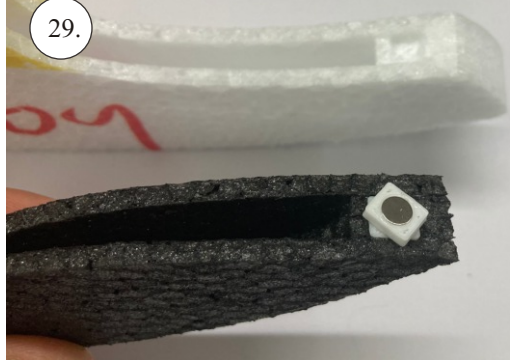
Medium CA

Activator



29.

Test polarity



30.

Medium CA

Activator

