

How to fit the boards for the third AlexMos gimbal axis of the brushless controller.

1. Solder the supplied pin headers on the board. See Figure 1:

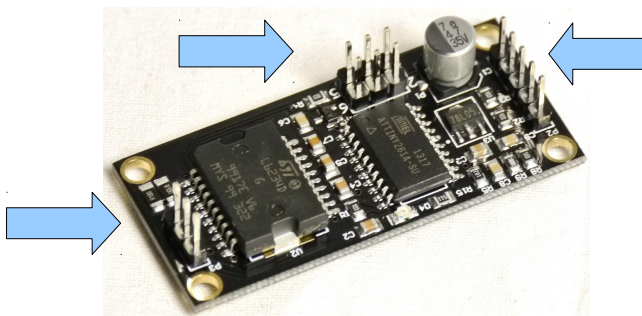


Abbildung 1

2. Solder the female pin headers onto the other board and solder the power cable (not included!) to the board. The polarity is indicated on the printed side. See Abb 2

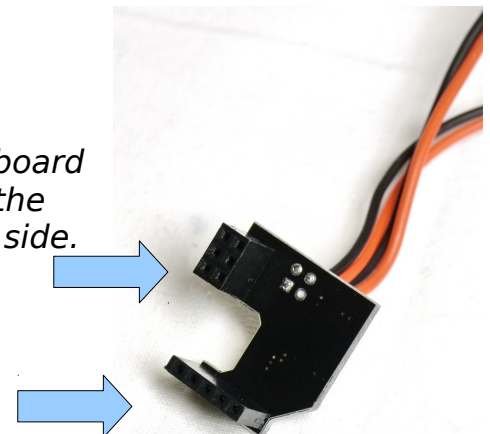


Abbildung 2

3. Put both together as show in figure 3

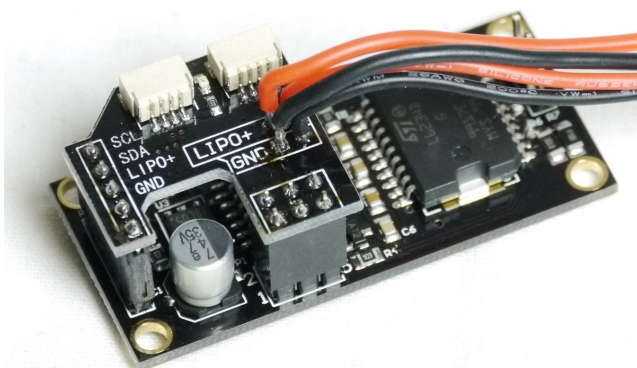
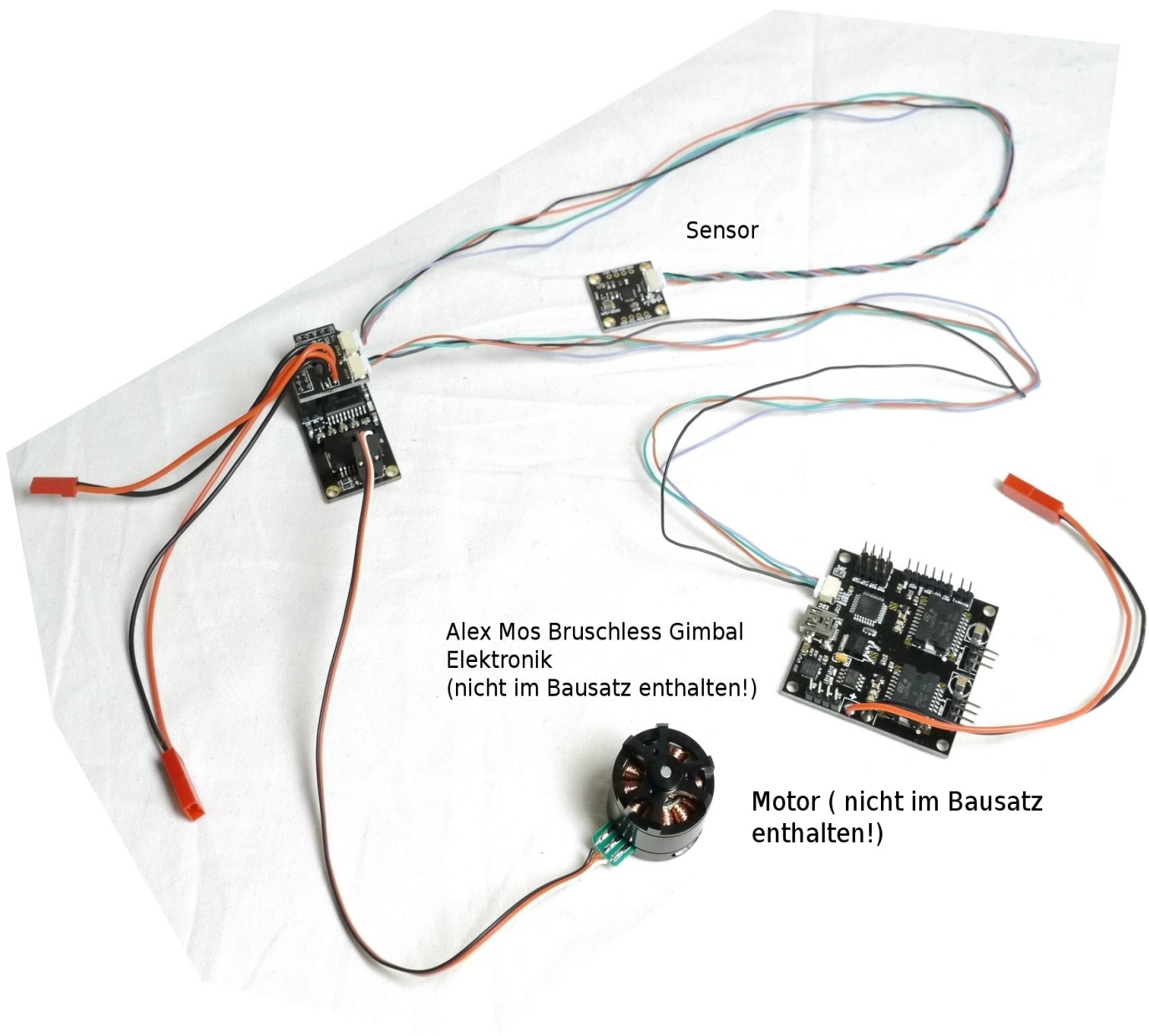


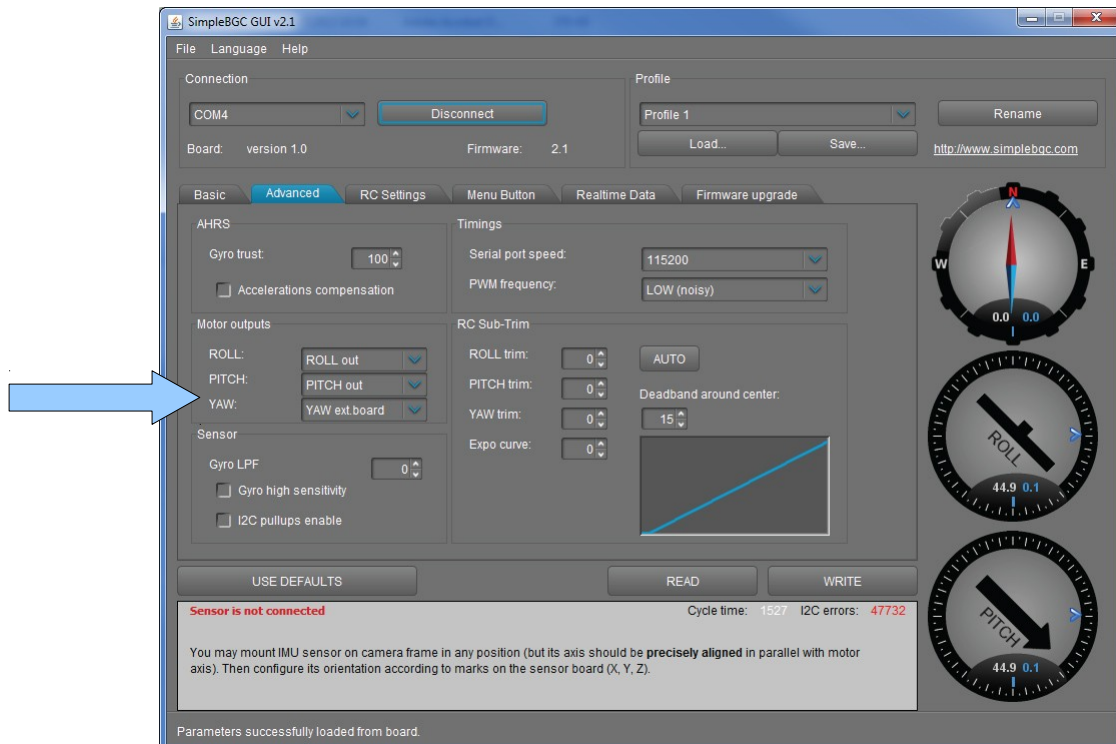
Abbildung 3

4. Now you can connect the Alex Mos Brushless Gimbal Electronic, the sensor and the motor (All this isn't included in this set!)

*This is, how it may look like.*



5. Since you powered up the assembly you can connect the AlexMos BGC to your Computer via USB. Start GUI (as given there).
6. Select the second tab and there the box labeled "YAW". Change value to "YAW ext.board"



7. Now you can set the P, I and D- values in the basic - tab for the 3rd axis.

