

#70852 & #70853 Zoomies Exhaust Headers

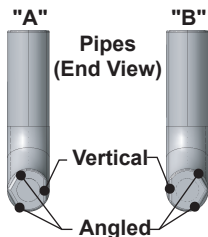
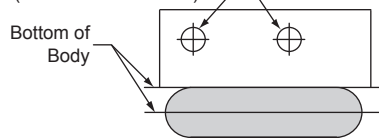
What's Included: 1- Left Side Mounting Plate, 1 - Right Side Mounting Plate, 4 - "A" Pipes, 4 - "B" Pipes, 4 - M3 x 8mm Buttonhead Screws & 8 - M3 x 6mm Flathead Screws.

Before You Begin: Read all of the following instructions before beginning. Determine the style of exhaust tip you want and where you want to mount them. **RPM Zoomies** can be installed coming out from under the body or through the body. Through-the-body applications can even invert the Pipes (Pipes exiting downward). The tips can also be straight up or angled 30° in either direction. However, it is important to decide before you cut and drill the body. Take a look at the Pipes. "A" and "B" Pipes are mirror images of each other. Your desired style will determine how they attach to the Mounts. Review the Mounts as well. There are orientation tabs on each mount that will set the proper angle of the Pipes.

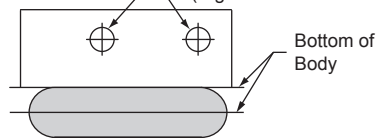
Installation (under-the-body): 1) Cut out the templates, leaving extra space around them. Choose whether you want a half pipe-diameter cutout or no cutout for the exhaust pipes. The top "Bottom of Body" reference eliminates cutting the body while the bottom "Bottom of Body" reference will require some body trimming (gray areas of the template above the line). Align your chosen line with the bottom edge of the body. The template must land in a relatively flat area. **RPM Zoomies** will not bolt correctly to contoured body areas. The edges of the template should remain within the body or the Mounting Plates will be exposed. Tape the templates to the outside of the body. Make sure there is at least 7/16" (11mm) of clear space behind the body so the chassis doesn't hit the Mounting Plate. □

2) Using a sharp object, press it through the crosshairs in the center of the two mounting hole locations and into the body. This will give you a pilot location for your drill. Drill out the mounting hole locations with a 1/8" (3.2mm) diameter drill and cut away any gray areas that overlap the body using a hobby knife or dremel. Remove the templates and jump ahead to "Installation (both options)" on the opposite side of these instructions. □

Right Side Template (Left Side for inverted)



Left Side Template (Right Side for inverted)



Installation (through-the-body): 1) Cut out the templates, leaving extra space around them. The template must land in a relatively flat area. **RPM Zoomies** will not bolt up correctly to contoured areas of the body. The edges of the template should remain within the body as well or the Mounting Plates will be exposed. **Important note:** If you want the Pipes to point downward (inverted), swap sides and flip the template over so **the grayed-out area is above the mounting holes**. Tape the templates to the outside of the body. Make sure there is at least 7/16" (11mm) of clear space behind the body so the chassis doesn't hit the Mounting Plate. □

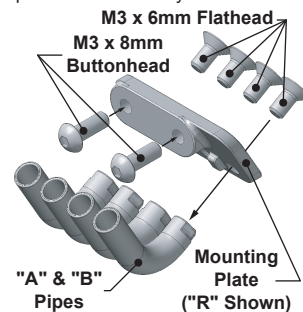
2) Using a sharp object, press it through the crosshairs in the center of the two mounting hole locations and into the body. This will give you a pilot location for your drill. Drill out the mounting hole locations with a 1/8" (3.2mm) diameter drill.

3) Using a sharp X-Acto knife or dremel tool, cut the grayed-out areas of the template out of the body. The exhaust tips will slip through these slots. Additional material may need to be removed once you test fit them in place. □

Installation (both options) 1) Bolt the Mounting Plates to the vehicle using the included M3 x 8mm Buttonhead Screws. The Mounting Plates are labeled "L" & "R" for "Left" and "Right" sides of the vehicle. For inverted applications, switch sides. The Mounting Plates must be installed **before** the Pipes since the mounting screws will conceal the Pipes on the body.

2a) For straight up or down (vertical) Pipes, place the vertical edge of the Pipes' timing flat against the orientation tabs, then lock in place with the included M3 x 6mm Flathead screws.

2b) For 30° angled Pipes, place the angled edge of the Pipes' timing flat against the orientation tabs, then lock in place with the included M3 x 6mm Flathead screws. There are two angled timing flats on each Pipe. Your application will determine which to use.



Tips: 1) The Pipes will time to the Mounting Plates as the screws are fully tightened. The timing tabs will still allow a small amount of play for minor adjustments.

2) Since the mounting screws for the Pipes are on an upward angle inside the body (for upward angled options), it may be easiest to flex the body outwards to access the Pipes' mounting screws.