

Platinum HV 160A V4

Brushless Electronic Speed Controller



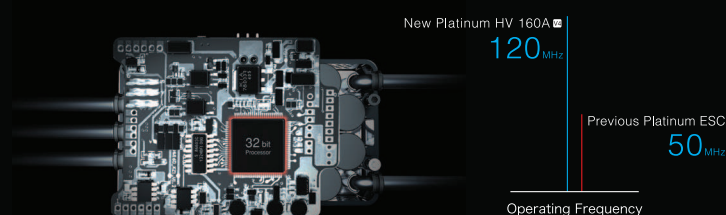
Innovative Heat Dissipation Structure

The innovative "duo" stacking structure allows all components on both sides of the printed circuit boards to quickly conduct heat to the aluminum case.



Excellent Motor Speed Governing

High-performance 32-bit processor combined with advanced algorithm makes the motor speed-governing excellent for different conditions. With the adjustable sensitivity of speed-governing, every pilot can find the most suitable settings for his helicopter.



One of a kind Design

The elegant cases are made by Aluminum. Each cooling slot and its fin were carefully designed and arranged, and the case has gone through oxidation, coloring and edge-highlighting.

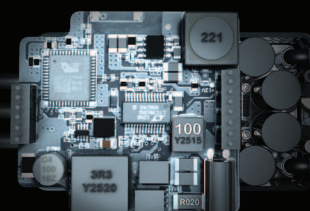


Super BEC

The built-in switch mode BEC with a continuously adjustable output voltage, range from 5V to 8V(step: 0.1V). It is certain to put out the power you need for rapid, precise steering servo operation.

Super Soft Start-up

Platinum-HV-160A makes the motor start extremely soft and avoids tail-drift issues of helicopter. The start-up time is adjustable within 8 to 25 seconds, this will definitely create a perfect starting point for every flight.

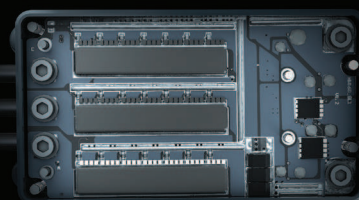


BEC Output Voltage
Continuously Adjustable 5-8 V

BEC Output Current
Continuous 10 A / Peak 25 A

Great Current Endurance

A high quality, and high voltage MOSFET with a great current endurance guarantees the ESC's safety especially in a extremely high power demanding situation.



1 Mosfet
100V / 80A
42 Mosfets

Main Application	Input Voltage	Cont./Peak Current	BEC Voltage	BEC Current (Cont./Peak)	Programming (PRG)/Fan Port	Throttle Signal/ RPM Signal Transmission	Input/output Wires	Weight/Size
700-800 class Helis	6S-14S	160A/200A (in 10 seconds)	5-8V (Step: 0.1V)	10A/25A	For connecting the LCD program box/WiFi module or Fan	Via Optical Coupler	10AWG 10AWG	282g (with input & output wires soldered to ESC)/106x50x34mm